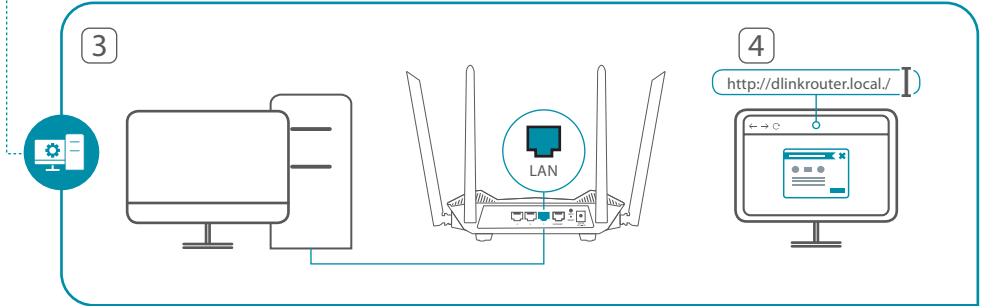
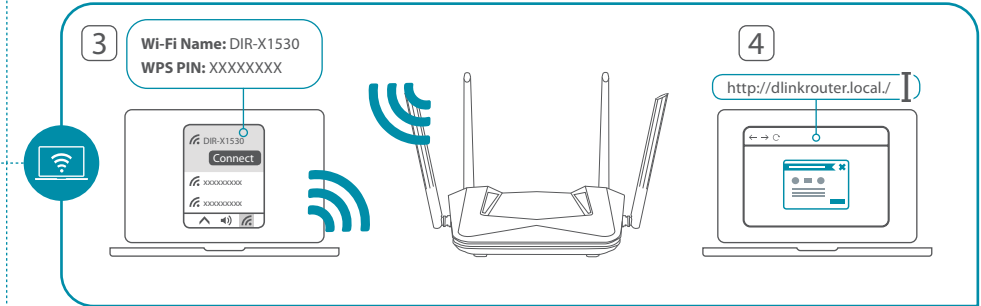
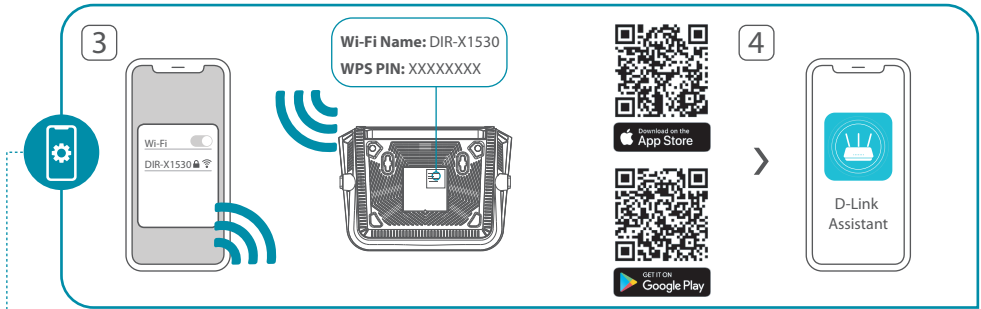
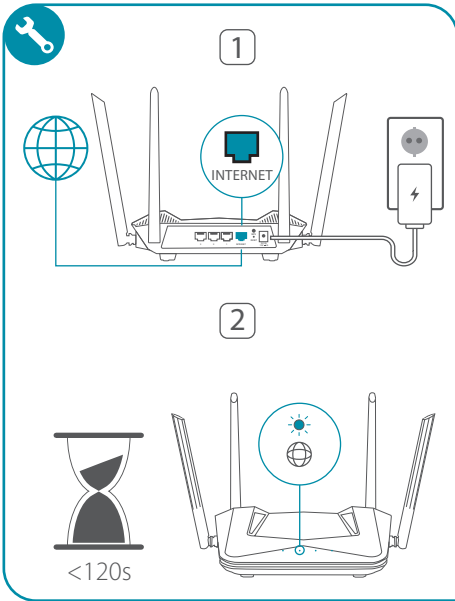
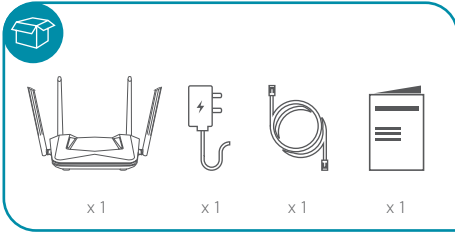


# Quick Start Guide

## DIR-X1530

### AX1500 Wi-Fi 6 Router



For more information please follow below



EN



RU



UA



BY



IL



KZ



TR



LT



LV



EE



AM



MD



GE



UZ



TJ



KG



TM



MN



## GPL Code Statement

This D-Link product includes software code developed by third parties, including software code subject to the GNU General Public License ("GPL") or GNU Lesser General Public License ("LGPL"). As applicable, the terms of the GPL and LGPL, and information on obtaining access to the GPL code and LGPL code used in this product, are available to view the full GPL Code Statement at:

<https://tsd.dlink.com.tw/GPL>

The GPL code and LGPL code used in this product is distributed WITHOUT ANY WARRANTY and is subject to the copyrights of one or more authors. For details, see the GPL code and the LGPL code for this product and the terms of the GPL and LGPL.

### Written Offer for GPL and LGPL Source Code

Where such specific license terms entitle you to the source code of such software, D-Link will provide upon written request via email and/or traditional paper mail the applicable GPL and LGPL source code files via CD-ROM for a nominal cost to cover shipping and media charges as allowed under the GPL and LGPL.

Please direct all inquiries to:

**Snail Mail:**  
Attn: GPL/SOURCE REQUEST  
D-Link Systems, Inc.  
14420 Myford Road, Suite 100  
Irvine, CA 92606

**Email:**  
[GPLCODE@dlink.com](mailto:GPLCODE@dlink.com)